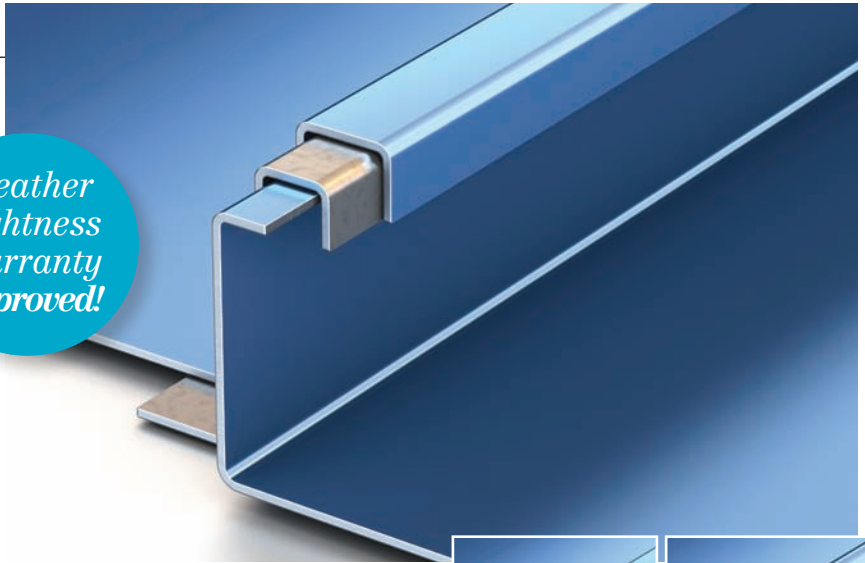


DMC 150SS Profile

Our DMC 150SS roof system will lend striking dimension to any architectural design. This versatile 1-1/2" mechanically seamed panel can be curved to a wide range of radiuses and applications – from barrel roofs to conical shapes and more. Concealed fasteners and a floating clip system reduce the effect of thermal stresses on the panels, helping to maintain a beautifully smooth, uniform appearance despite fluctuations in temperature.

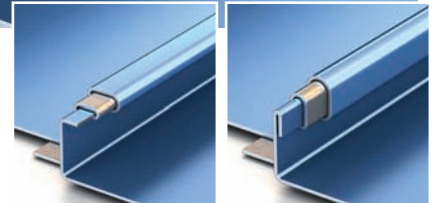
*Weather
Tightness
Warranty
Approved!*



Ideal Application:

Commercial

Residential



Single lock panel

Double lock panel



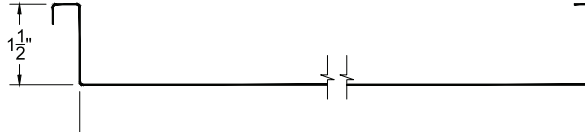
DMC 150SS Profile



Available widths:

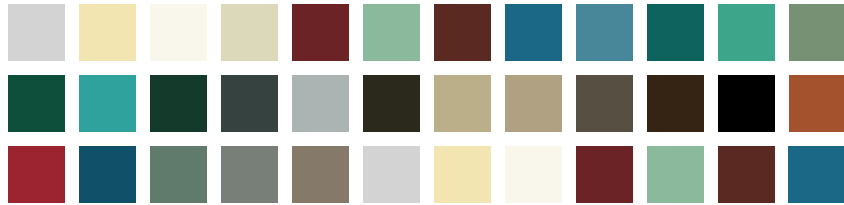
12", 14", 16", 18", 19" or 20"

*Drexel Metals design pressures, wind uplifts and test reports are for specific deck attachments, material gauges, clip spacing and panel widths. A complete specification and listing is available online at www.drexelmetals.com



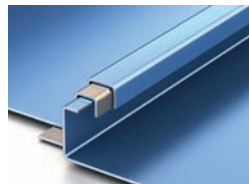
Substrates available:

- Galvalume® – 24ga and 26ga
- Drexlume® – 24ga and 26ga
- Aluminum – .032"
- Copper – 16 oz and lead-coated copper
- Falzinc

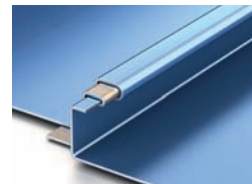


Profile Options:

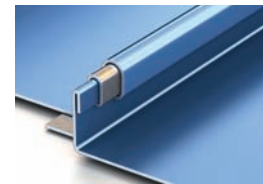
- Single lock panel
- Double lock panel
- Radius panel (single or double lock)



Unseamed panel



Single lock panel



Double lock panel

Finishes and product warranty:

Available in a variety of coatings and colors by AkzoNobel. See the Drexel Metals color card for standard colors and paint specifications.



Galvalume® Substrate:
High-performance painted metal roofing product, carefully tensioned leveled for superior flatness.

35 YEAR WARRANTY
35-Year Non Pro-rated PVDF Paint Warranty

Aluminum Substrate:
High-performance painted metal roofing product, carefully tensioned leveled for superior flatness.

35 YEAR WARRANTY
35-Year Non Pro-rated PVDF Paint Warranty

Drexlume® Substrate:
Mill finished Galvalume® with a two-sided, clear acrylic finish.

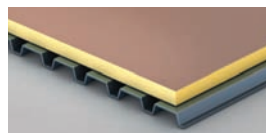
25 YEAR WARRANTY
25-Year Non Pro-rated Drexlume Warranty (Acrylic Coated Galvalume)

Production options:

Factory made or field rolled to exact lengths
Optional: striation, beads, pencil ribs

Installation:

Can be installed over steel decking with PolyIso, or over plywood decking and Drexel Metals MetShield® underlayment.



Slope:

Minimum slope 2:12



Minimum Roof Pitch:
2:12 – low roof pitch

Testing:

In accordance with:



- UL 580 Wind Uplift (Class 90)
- TAS 125 Wind Uplift
- UL 1897 Extended Phase Wind Uplift
- UL 2218 Class 4 Hail Impact
- UL 790 Class A Fire Rating
- UL Environmental – SRI Third Party Verified
- ASTM E1646 Water Infiltration
- TAS 100 Wind Driven Rain
- ASTM E1680 Air Infiltration
- ASTM E1886 Missile Impact
- ASTM 2140 Static Pressure Water Head
- Miami-Dade County Approved
- Florida Building Code Approved
- Texas Department of Insurance Approval

1421 S. Cooper St., Jackson, MI 49203
517-782-8884 phone • 517-782-8906 fax
info@jacksonamf.com

