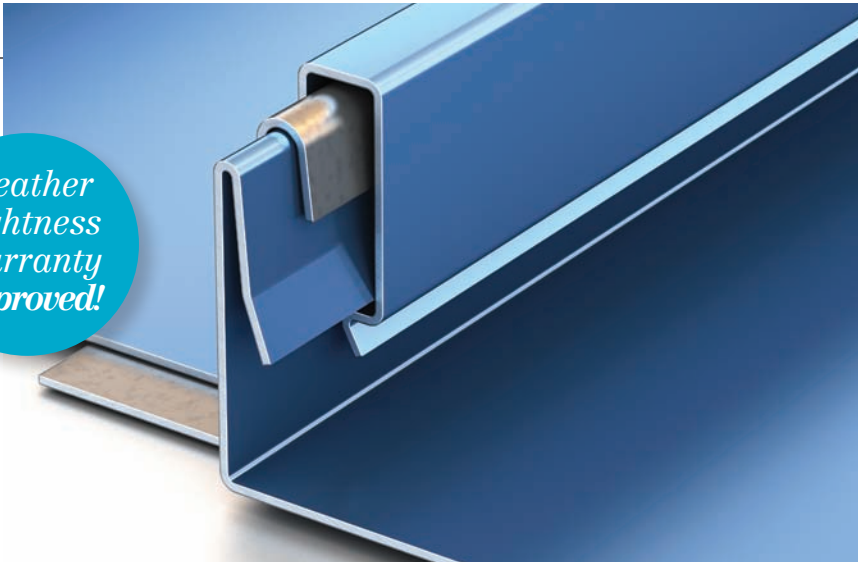


DMC 175S Profile

The DMC 175S is distinctive for its broad width seam, impressive structural capabilities and easy Snap Lock installation. Featuring a 1-3/4" seam height, this continuous interlocking engineered roof system has a concealed fastener and clip application that allows thermal movement and requires no mechanical seaming to ensure weathertight integrity. The installation is simple and quick, yet it withstands extremely high design pressures and is approved for use on Weather Tightness Warranty projects.

*Weather
Tightness
Warranty
Approved!*

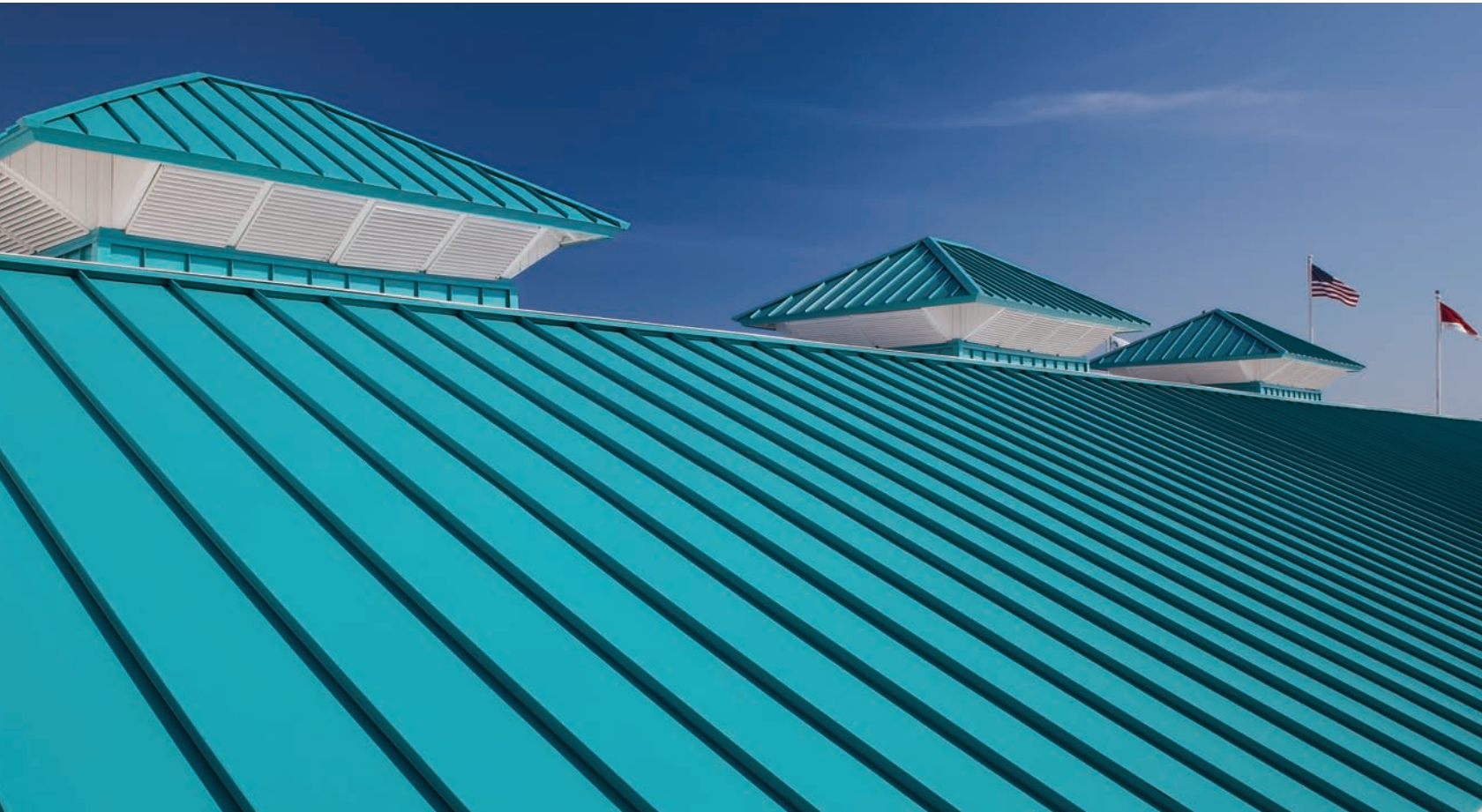


Ideal Application:

Residential

Institutional

Structural

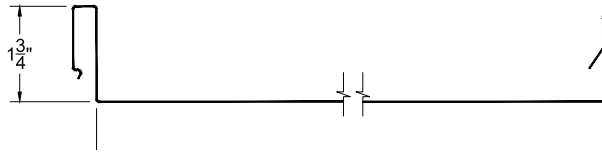


DMC 175S Profile

Available widths:

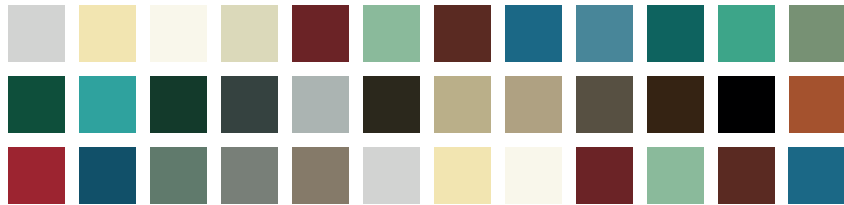
12", 14", 16" or 18"*

*Drexel Metals design pressures, wind uplifts and test reports are for specific deck attachments, material gauges, clip spacing and panel widths. A complete specification and listing is available online at www.drexelmetals.com



Substrates available:

- Galvalume® – 22ga and 24ga
- Drexlume® – 24ga
- Aluminum – .032" and .040"



Finishes and product warranty:

Available in a variety of coatings and colors by AkzoNobel. See the Drexel Metals color card for standard colors and paint specifications.



Galvalume® Substrate: High-performance painted metal roofing product, carefully tensioned leveled for superior flatness.

35 YEAR WARRANTY
35-Year Non Pro-rated PVDF Paint Warranty

Aluminum Substrate: High-performance painted metal roofing product, carefully tensioned leveled for superior flatness.

35 YEAR WARRANTY
35-Year Non Pro-rated PVDF Paint Warranty

Drexlume® Substrate: Mill finished Galvalume® with a two-sided, clear acrylic finish.

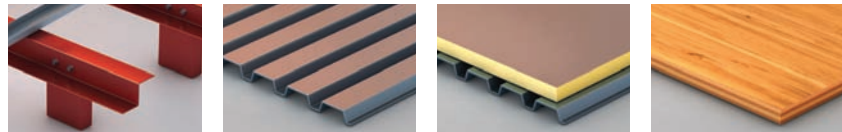
25 YEAR WARRANTY
25-Year Non Pro-rated Drexlume Warranty (Acrylic Coated Galvalume)

Production options:

Factory made or field rolled to exact lengths
Optional: striation, beads, pencil ribs

Installation:

Can be installed over open frame steel purlins, steel decking, steel decking with Polyiso or plywood decking.



Slope:

Minimum slope 2:12



Minimum Roof Pitch:
2:12 – low roof pitch

Allowable uniform:

Inward load table – psf

Deflection Ratio L/180

Span	2.00	2.50	3.00	3.50	4.00	4.50	5.00
24 ga x 16"	251	201	145	108	83	66	53
24 ga x 18"	205	131	90	66	50	39	32

Testing:

In accordance with:



- UL 580 Wind Uplift (Class 90)
- TAS 125 Wind Uplift
- UL 1897 Extended Phase Wind Uplift
- UL 2218 Class 4 Hail Impact
- UL 790 Class A Fire Rating
- UL Environmental – SRI Third Party Verified
- ASTM E1646 Water Infiltration
- TAS 100 Wind Driven Rain
- ASTM E1680 Air Infiltration
- ASTM E1886 Missile Impact
- Miami-Dade County Approved
- Florida Building Code Approved
- Texas Department of Insurance Approval



1421 S. Cooper St., Jackson, MI 49203
517-782-8884 phone • 517-782-8906 fax
info@jacksonamf.com

