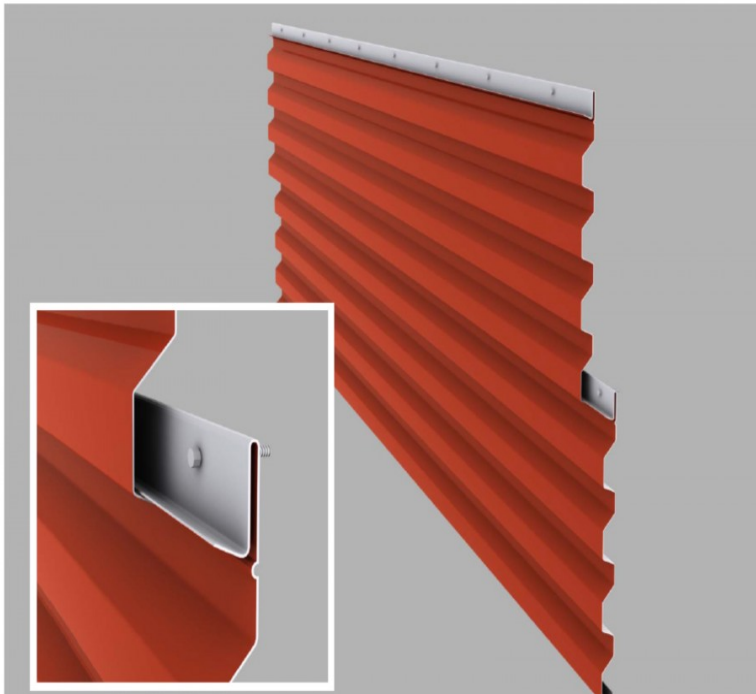




**JACKSON ARCHITECTURAL METAL
FABRICATORS, LLC**
One stop Shopping for All your Metal Needs
office: 517-782-8884/fax: 517-782-8906

ULTRA-RIB PANEL

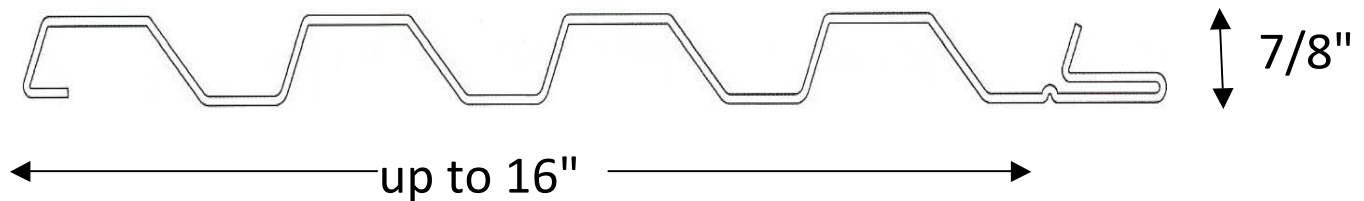


PRODUCT FEATURES

- *Asymmetric corrugated profile for horizontal application
Clean & attractive architectural design
- *Suitable for wall, liner or screen wall application
- *Concealed anchor attachment
- *Simple clip-less design
- *Quick & easy installation
- *Optional mitered corner panels available

The Ultra-Rib panel sets the industry standard for concealed anchor, horizontally-oriented corrugated wall panels. The clean architectural design provides a traditional horizontal rib application with the added security of concealed fastening. The clip-less design results in fast and easy installation while the uniform rib profile provides an exceptionally rigid panel suitable for installation over open framing. Factory mitered corner panels are available to eliminate added trim and interruption of the panel at corner transitions. Ultra-Rib panels are designed and intended for vertical wall applications and are not to be used for roofing.

PROFILE



ULTRA-RIB LOAD SPAN PROPERTIES

24 GAUGE STEEL/ALLOWABLE LOADS@ L/180

SPAN(ft)	SPAN (in)	XALL=L/180	SINGLE SPAN	DOUBLE SPAN	TRIPLE SPAN
2.00	24	0.133	367	367	459
2.50	30	0.167	235	235	294
3.00	36	0.200	153	163	204
3.50	42	0.233	96	120	150
4.00	48	0.267	64	91	114
4.50	54	0.300	45	72	85
5.00	60	0.333	33	58	62
5.50	66	0.367	24	48	46
6.00	72	0.400	19	40	36

ALLOWABLE LOADS (psf)

DESIGN PARAMETERS:

- * DEFLECTION = $L/180$
- * ALLOWABLE STRESS = 21,000 psi

PRODUCT PROPERTIES:

- *E= 29,000ksi
- *I = 0.04815 (in⁴/ft)
- *EF = 0.4583 (in)