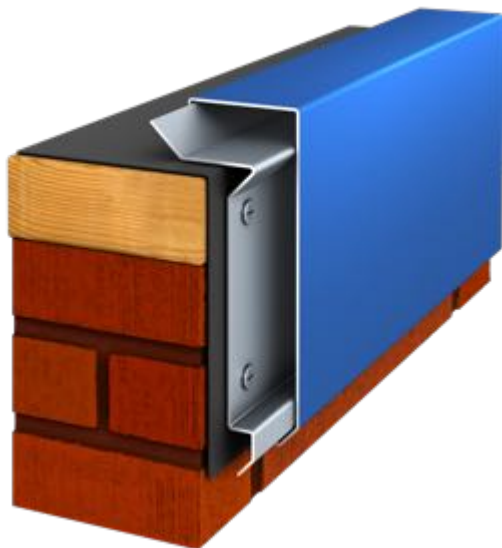


## JAMF Fascia HD System



### Overview

The JAMF Fascia HD System is a two-part assembly that includes a continuous cleat and a decorative fascia cover for single-ply commercial roof systems. Our Fascia HD is available in pre-painted Kynar500® .040" formed aluminum as 24 gauge Galvalume steel. This product features a 20 gauge pre-punched cleats with fasteners spaced at 12" on center. All products come in standard 10' standard cleat and coping cover lengths. Concealed splice plates and fasteners are included with the purchase of this product.

### Features and Benefits

- Secures roof Membrane to Parapet Wall
- Allows for the use of high-torque screws without penetrating the top surface of the Membrane
- Pre-Punched Continuous Cleat
- ANSI-SPRI ES-1 Certified
- 210 MPH LIFETIME Wind Warranty
- Gold Standard Warranty
- Corporate and Custom Colors are available

### Installation

For complete installation instructions, please refer to JAMF Architectural specifications and details.

REVIEW CURRENT JAMF ARCHITECTURAL SPECIFICATION AND DETAILS FOR SPECIFIC INSTALLATION REQUIREMENTS.

### Quality Assurance

JAMF Fascia HD system is tested per ANSI/SPRI Test Method RE-2 for fascia. The Fascia HD systems shall be certified by JAMF to design pressures as indicated in current edition of SPRI's Wind Resistance Standard for Edge Systems used with Low Slope Roofing System. This products meets International Building Code minimum requirement.

### Technical Services

Engineering and shop drawings, as well as long-form specifications and CAD details, are available from JAMF. Product samples, detail sheets, color chips and color charts are also available for submittal packages. For personal assistance with questions or for full submittals, contact JAMF or your local independent sales representative.

### Specifications

Material	Face	Sustained Pressures
24 gauge	up to 8"	-260 psf (*)
0.040 AL	up to 8"	-340 psf (*)

\* Design Engineer must apply the Factor of Safety

\*\*ADDITIONAL GAUGES - .050 and .063 aluminum and 22 gauge Galvalume are available upon request

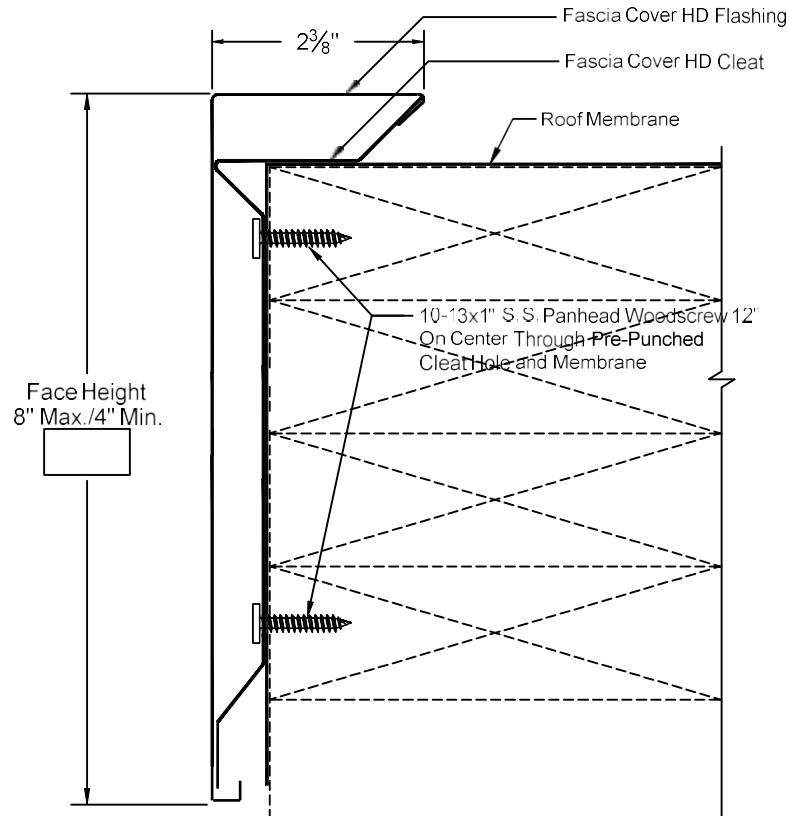
**Jackson Architectural  
Metal Fabricators**

1421 S. Cooper St., Jackson, MI 49203  
Phone: 517-782-8884  
Fax: 517-782-8906  
web: [jacksonamf.com](http://jacksonamf.com)  
email: [info@jacksonamf.com](mailto:info@jacksonamf.com)

# Fascia Cover HD

Part number8

ANSI/SPRI ES-1 CERTIFIED:



- Continuous Cleat and Fasteners provided.
- Concealed Splice Plates provided.
- Continuous Cleat: ☐ 22GA ☐ 20GA

## PRINT APPROVAL:

Architect and/or Contractor shall verify all dimensions, sizes, and quantities, All products to be installed in strict accordance with Jackson Architectural Metals printed instructions.

Approved By: \_\_\_\_\_

Date: \_\_\_\_\_

## QUANTITIES:

Lineal Feet (10'-0" Lengths\*): \_\_\_\_\_

Outside Miters\*\* : \_\_\_\_\_ ☐ Optional Welded (Surcharge Applies)

Inside Miters\*\* : \_\_\_\_\_ ☐ Optional Welded (Surcharge Applies)

Right End Caps\*\* : \_\_\_\_\_ ☐ Optional Welded (Surcharge Applies)

Left End Caps\*\* : \_\_\_\_\_ ☐ Optional Welded (Surcharge Applies)

Splice Plate Tape Sealant: ☐ Optional Sealant (Surcharge Applies)

\* Optional lengths available up to 20'-0"

\*\* Standard riveted

PROJECT:

ARCHITECT:

ROOFING CONTRACTOR:

REPRESENTATIVE:



Jackson Architectural Metals, LLC  
1421 S. Cooper St  
Jackson, MI 49203  
Phone: (517)782-8884/ Fax: (517) 782-8906  
www.jacksonamf.com

## MATERIAL:

☐ 24GA ☐ .040" AL

☐ Other: \_\_\_\_\_ ☐ .050" AL

Finish: \_\_\_\_\_

Color: \_\_\_\_\_

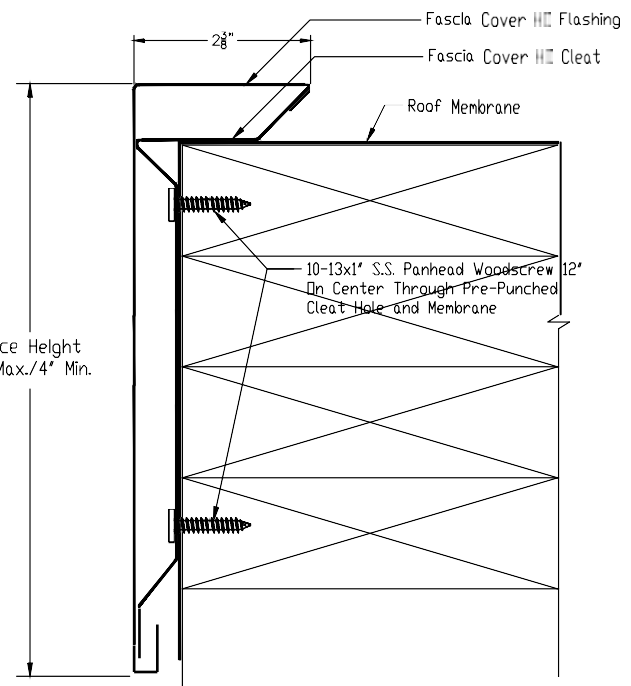
☐ Carlisle

☐ Firestone

☐ Other

# Jackson Architectural Metal Fabricators

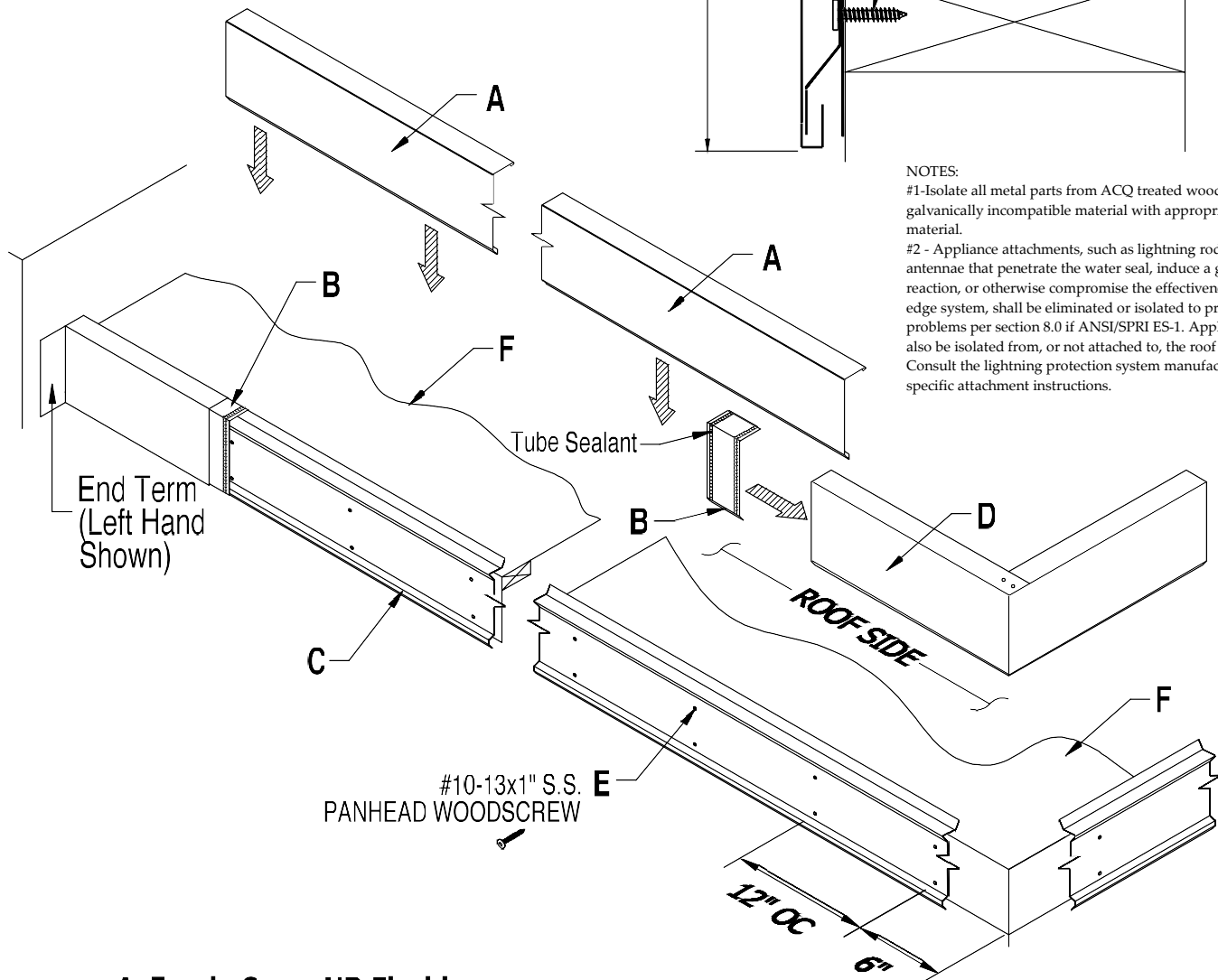
## Installation Guide for Fascia Cover HD



### NOTES:

#1-Isolate all metal parts from ACQ treated wood or other galvanically incompatible material with appropriate membrane material.

#2 - Appliance attachments, such as lightning rods, signs, or antennae that penetrate the water seal, induce a galvanic reaction, or otherwise compromise the effectiveness of the roof edge system, shall be eliminated or isolated to prevent problems per section 8.0 if ANSI/SPRI ES-1. Appliances should also be isolated from, or not attached to, the roof edge system. Consult the lightning protection system manufacturer for specific attachment instructions.



**A. Fascia Cover HD Flashing**  
10'-0" Std. Lengths (20'-0" Max.)

**B. Fascia Cover HD Splice Plate**  
6" Lengths

**C. Continuous HD Cleat**  
10'-0" Lengths

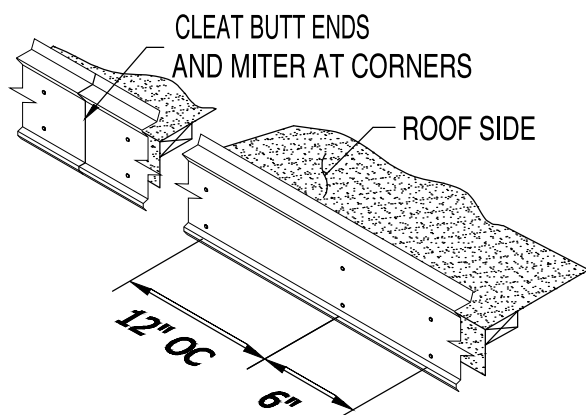
**D. Fascia Cover HD Miter**  
(Outside Corner Shown)

**E. #10-13x1" S.S. Panhead Woodscrew**  
at 12" o.c. Staggered (6" from ends)  
(Included & Required)

**F. Approved Roofing Membrane**  
(By Installer)

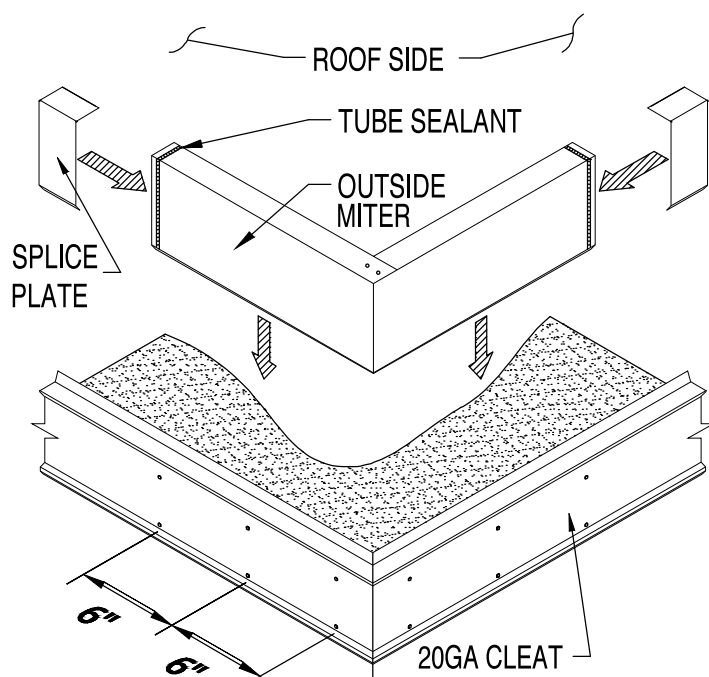
Jackson Architectural Metal Fabricators  
1421 South Cooper Street - Jackson, MI 49203  
Phone: 517-782-8884 / web: [www.jacksonamf.com](http://www.jacksonamf.com)

# Jackson Architectural Metal Fabricators



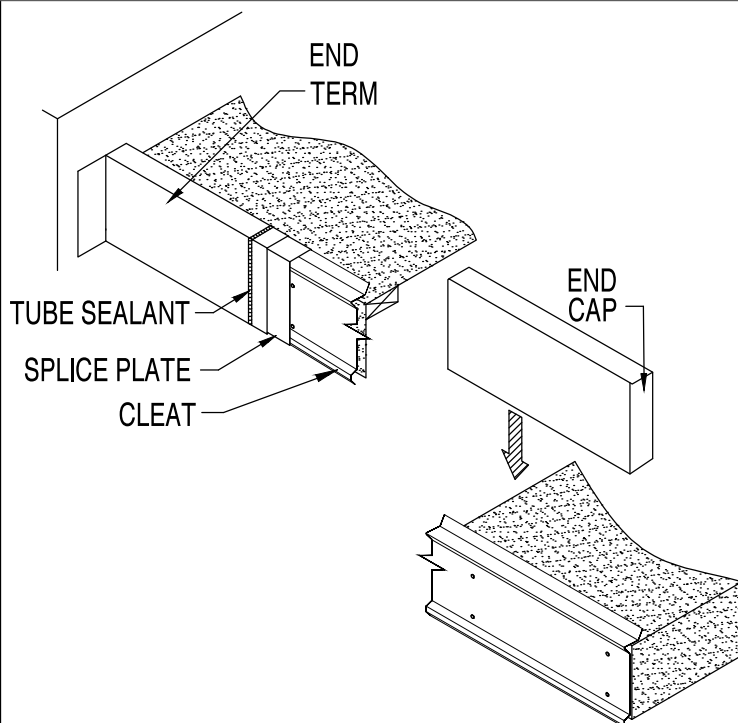
## STEP 1 : Installing Galvanized Cleat

Place the face of the Cleat squarely on the edge of the roof membrane over the wood nailing plate. Press securely in position and screw through the pre-punched face holes with #10-13x1" S.S. Panhead Woodscrews provided. For Miter application, miter cut into corner as required to maintain a continuous Cleat line. Then fasten at a min. 6" in each direction from the corner or closer at special conditions. Butt Cleat ends and apply Tube Sealant over butted Cleat ends.



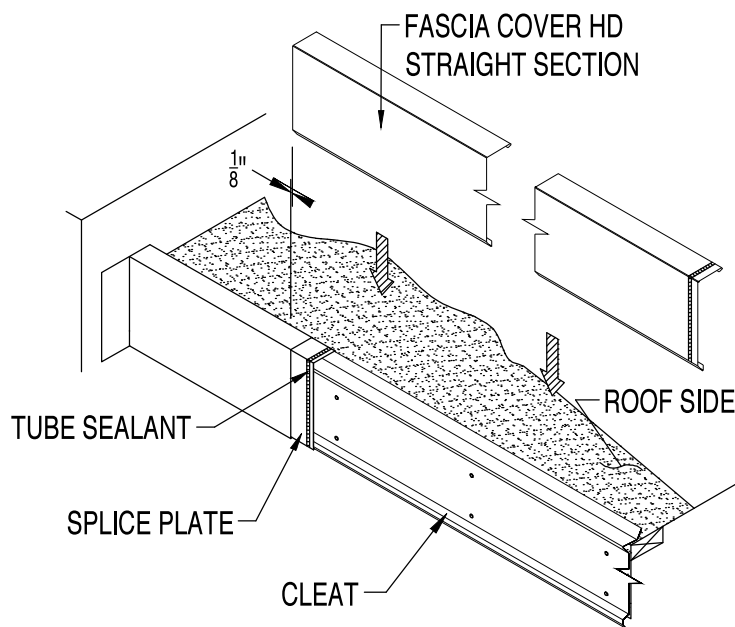
## STEP 2 : Installing Fascia Cover HD Mitters

Locate the Miters and Splice Plates for the appropriate corners. Apply a bead of Tube Sealant inside Miter ends and place a Splice Plate under each end of the Miter sections. Install the Fascia Cover HD Miter by hooking the Fascia Cover HD Miter onto the roof side kick up of the Cleat, and push down onto the lower kick out of the Cleat.



## STEP 3 : Installing Fascia Cover HD End Caps and End Terms

Apply a bead of Tube Sealant inside End Cap or End Term and place a Splice Plate under each end of the End Cap or End Term. Install the Fascia Cover HD End Caps and End Terms by hooking the drip of the Fascia Cover HD End Cap or Term onto the roof side kick up of the Cleat and push down onto the lower kick out of the Cleat.



## STEP 4 : Installing Fascia Cover HD Straight Lengths

Apply a bead of Tube Sealant onto the Splice Plate of the Miter, End Term, or End Cap. Install the Fascia Cover HD Flashing by hooking the flashing onto the roof side kick up of the Cleat and push down onto the lower kick out of the Cleat. **Allow  $\frac{1}{8}$ " Gap between Fascia Cover HD lengths for thermal expansion.** Consider lengths of all straight pieces prior to cutting to avoid creating relatively short sections adjacent to one another. Note: There should be a Splice Plate at every joint.